

HPLC Detector S3250

A sensitive UV/Vis detector for routine applications

- UV/Vis detector for HPLC in single-channel and double-channel version
- Deuterium and tungsten halogen lamp for optimized energy throughout the whole wavelength range
- Programmable wavelength
- High sensitivity
- Selection of flow cells to suit all application areas
- Stackable with all other modules of the Celeno series for minimum bench space requirements
- Remote control and digital data acquisition using the Geminix III Chromatography Data System



Description

The detector is especially suited for routine operation due to its high sensitivity. The use of two independent light sources (deuterium and tungsten halogen lamp) guarantee sufficient light energy over the whole wavelength range from 190 to 900 nm. Thereby, the S3250 detector features a very low baseline noise and linear measurement even of highly absorbing substances up to > 2 AU.

The S3250 detector is available as single- and dual-channel version, suitable for various routine applications. Data is digitally acquired and read from the Geminix III Data System.

Remote control of wavelength via the Geminix III Data System permits controlled changes to different wavelengths during the application.

Flow cells with different cell volumes in stainless steel and PEEK allow to configure the S3250 detector according to various applications, from microbore via standard-analytical applications up to the semi-preparative range. The flow cell is easily accessible via the wide opening front door for easy cleaning and exchanging.

Cut-outs in the front door of all instruments of the Celeno series allow for optimized and nearly invisible routing of the capillaries while still allowing easy access in case of maintenance.

The S3250 detector also features a built-in peak detection that can be used via the 24V switching output to control e.g. an optional, external switching valve for use as fraction collector or for solvent recycling. Detection levels (peak boundaries) are adjustable via the instrument keyboard.

The Deuterium and tungsten halogen lamp are accessible via a service side-gate for easy replacement

Specifications:

Wavelength range:

190 to 900 nm

Light source:

Deuterium and tungsten halogen lamp

Wavelength accuracy:

±2 nm

Bandwidth:

≤ 8 nm

Noise

≤ 1 x 10⁻⁵ AU

Drift: (ASTM E1657-94)

< 3 x 10⁻⁴ AU/h

Control:

RS232 control

Dimensions:

396 x 165 x 478 mm (W x H x D),

approx.. 10 kg

Power Supply

90 -260 V, 47 - 63 Hz

Ordering Information:

78-290125

Detector S3250
single-channel-detector
190-900nm
(without flow cell)

78-290126

Detektor S3250
dual-channel-detector
190-900nm
(without flow cell)

78-290127

Analytical Flow cell – stainless steel for detector S3250

78-290128

Analytical Flow cell – PEEK for detector S3250

Other cells on request

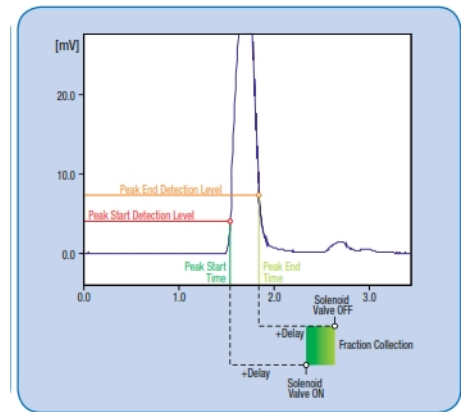


Abbildung: S 3250 Peak Detektor

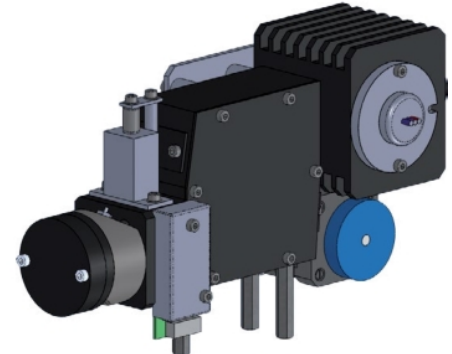


Abbildung: S 3250 Optik

Goebel Instrumentelle Analytik GmbH

Mainburger Str. 8
D-84072 Au i.d. Hallertau
Deutschland

Tel.: +49 / (0) 87 52 / 86 708 - 0

Fax: +49 / (0) 87 52 / 86 708 - 20

WEB: www.goebel-analytik.de

E-Mail: analytik@goebel-analytik.de